

## Interpretation, Prospect Generation and Evaluation

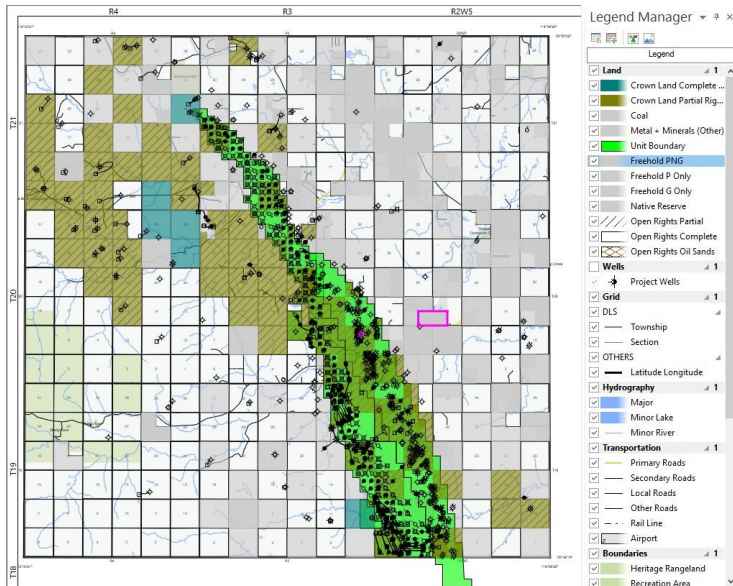
*We provide service of a complete exploration team to delineate, evaluate and generate leads, provide due diligence on a deal and carry out reserve evaluation reports*

Petro-Explorers team provides exploration and development interpretation service on-site and in-house as per client requirement. Our team includes experienced geologists, geophysicists, geomodelers, reservoir engineers and reserve economists.

### Data Loading and Data Management

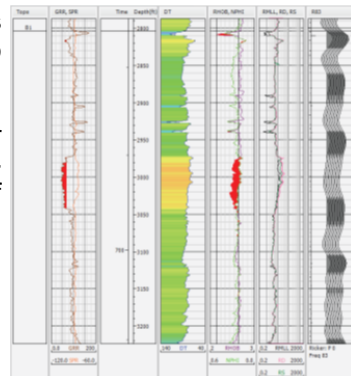
For the success of any project information management is one of the key task. Our team can arrange data available and carry out data transfer to have it ready for interpretation. We can coordinate with the seismic data brokers to QI key data and save time spent for locating the availability of good seismic available in the area.

### Geological Mapping and Well Correlation



Our geologists are well versed both in WCSB databases and international basins. We carry out detailed geological mapping using sequence stratigraphic principles.

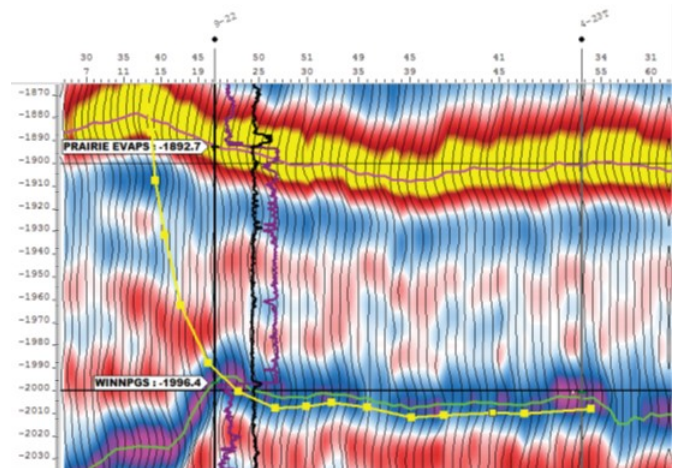
Rock Physics and Petrophysics analysis can also be added to correct data for interpreter.



Tuning analysis for thin reservoir is done to make sure that the reservoir is visible at the frequency of the seismic available in the area.

### 2D/3D Seismic Interpretation

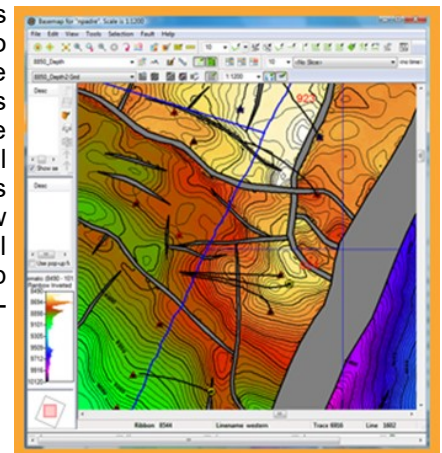
We provide complete seismic interpretation solution often starting with grid balancing of seismic ties. We review all available seismic data, irrespective of how old it is and correct them for phase changes. Initial interpretation is done based on visible sequence boundaries with mega-sequences. A initial step the results are integrated with gravity, magnetic and geological maps.



This is followed by synthetic ties using VSP and check-shot data. The fault framework is picked and if required, palinspastic restoration techniques are used at this stage to reduce the risk of mis-interpreting across major fault blocks.

### Integrated Horizon and Fault Mapping

After going through all stages of picking, maps are generated or geobody detection work is done in order to separate possible prospects. Various critical levels are mapped and interval facies analysis is used to narrow down depositional directions and keep a check on the integrity of horizon.

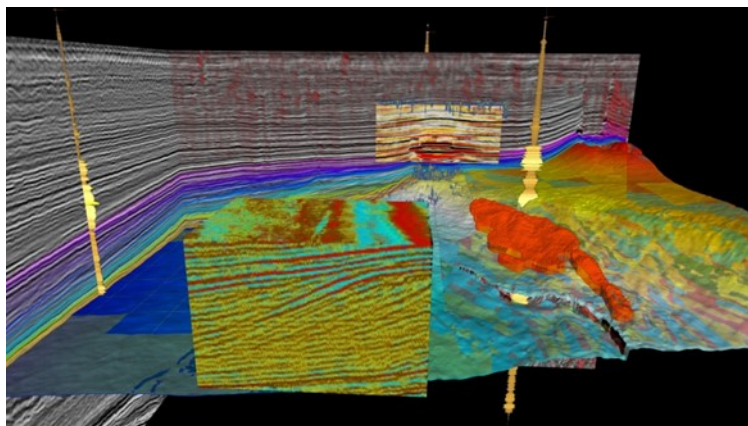


# INTERPRETATION, PROSPECT GENERATION AND EVALUATION

## Resource Evaluation

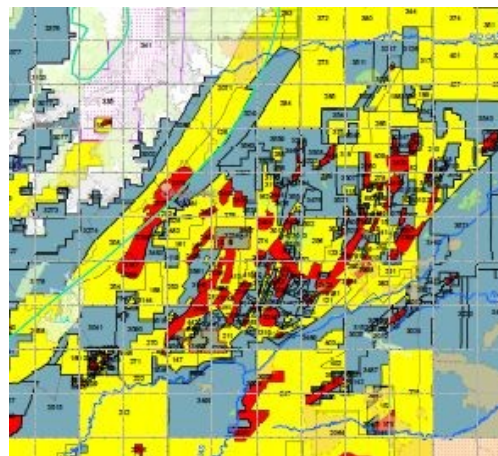
We carry out due diligence and provide qualified reserve evaluation service following APEGA standards and ASC NI 51-101.

We also provide Competent Person's Report, Qualified Person's Report or equivalent. As defined The aim of a CPR is to provide a responsible, unbiased and independent opinion on the technical aspects of the company, with the ultimate purpose of informing and protecting investors.



## Bid Round and Land Sale Evaluation

Many companies are too busy to evaluate possible farm-in, land posting, divestiture or bid-round offers even if those are in their core areas. Under the confidentiality, our team can work on your behalf and provide you complete un-biased evaluation and risk report.



Example: Colombia 2010 Bid Round Evaluation for NXT Energy Solutions. 300 2D lines and 20 3D's were evaluated for prospectivity over 5 basins.

## Field Development Plans

In the International Oil and Gas Exploration many companies require a team building where a small discovered field is handed over to them to develop. As a new development company, they require development of Field Development Plan that is professional and can be used as a guide and can be refined with time with adjustments required based on local rules and regulations. Our team works together with the local workforce to take into account timeline required for supplies and pace of development. Our Field Development Plans are based on knowledge and years of experience that our team have gained while working with major Oil and Gas companies.

## The Team

Petro-Explorers team carries more than 100 years of combined technical and managerial experience with background in various facets of Oil and Gas Exploration and Production. We rely on strong network of consulting alliance and technically advised by 30+ year experienced advisors.



Projects location and major clients



**YOUR EXPLORATION PARTNERS**

**PETRO-EXPLORERS INC.**

300, 840-6th Ave. SW Calgary  
Alberta T2P 3E5 Canada  
Off: +1 403.260.5395  
Fax: +1 403.265.3783  
info@petroexplorers.com